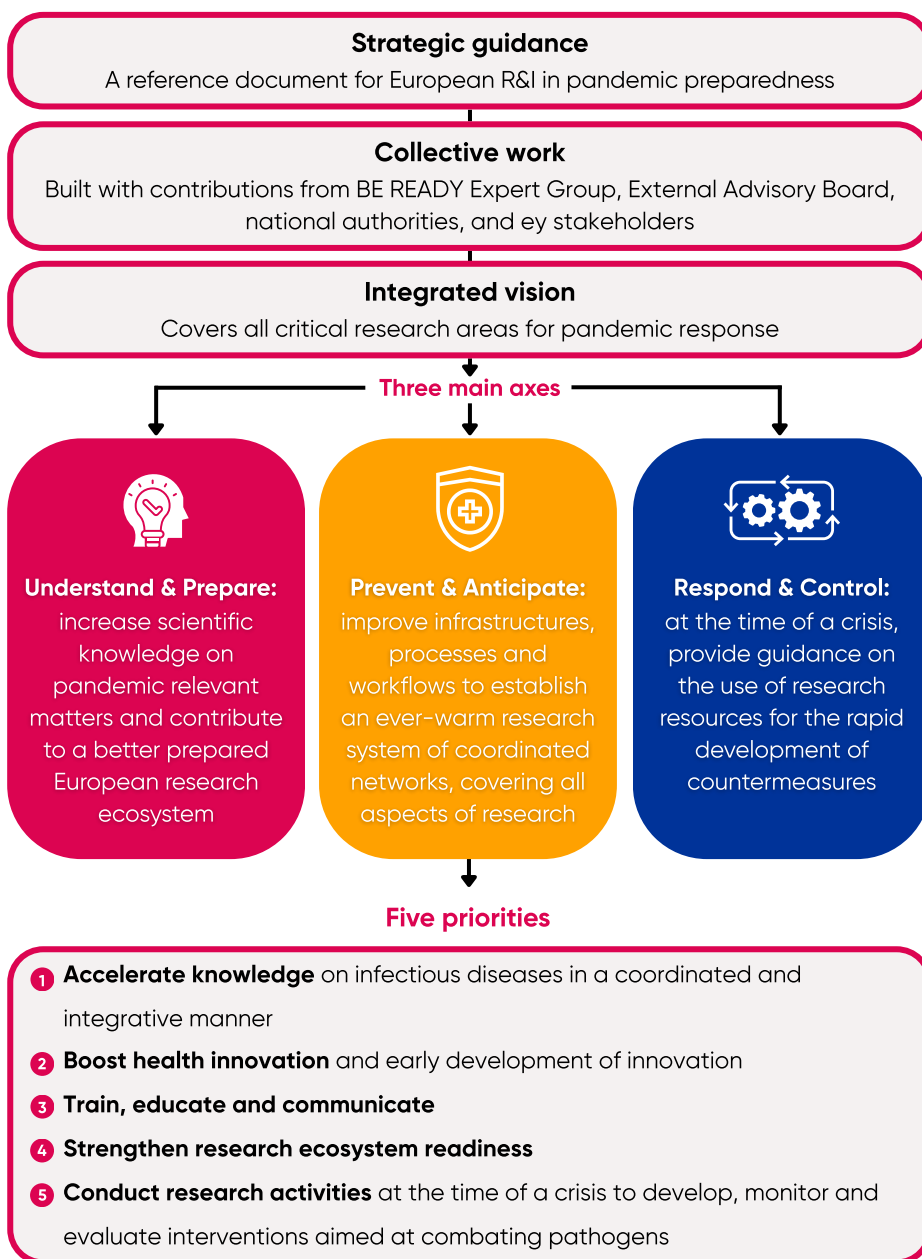


Strategic Research and Innovation Agenda

The **Strategic Research and Innovation Agendas** (SRIA) are key components of European Partnerships. Built collectively with all stakeholders in the field, they represent a roadmap for the future research in the scope of their respective Partnerships. The BE READY SRIA was developed in 2022-2024, following a thorough process ensuring its pertinence and comprehensiveness.

Centred around **three main axes** and **five strategic priorities** (see Figure beside), the SRIA will guide the scientific work of the European Partnership for Pandemic Preparedness throughout its first phase (2026-2028).

To ensure words are followed by concrete actions, it will be translated into ambitious research projects funded by Joint Transnational Calls (JTC) and support to cooperative activities aiming to increase European pandemic preparedness.



Find out more about [SRIA](#):



The R&I landscape changes continuously thanks to the relentless work of all stakeholders, and is ready to adapt to numerous public health threats. The SRIA was therefore conceived as a living document, and will be updated if necessary at the time of a crisis to include outbreak-specific content. It will be ultimately reviewed at the end of the first phase of BE READY to usher in the second phase of the Partnership.

